

## D-Glucose Monohydrate (Dextrose), cell culture tested

**CAT N°:** PM-T1730

**Storage conditions:** Room temperature, protected from moisture

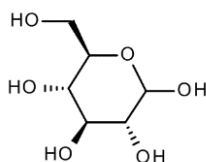
**Shelf life:** 48 months

**Composition:** D-Glucose Monohydrate

**Molecular weight:** 198.17 g/mol

**CAS Number:** 14431-43-7

**Chemical Formula:** C<sub>6</sub>H<sub>12</sub>O<sub>6</sub>. H<sub>2</sub>O



**Appearance:** White crystalline powder

**Arsenic:** < 1 ppm

**Calcium:** < 200 ppm

**Chloride:** < 125 ppm

**Sulphate:** < 200 ppm

**Water:** 8.25 ± 1.25 %

### Recommended use:

- Respect storage conditions of the product
- Do not use the product after its expiry date
- Store the product in a dry area
- Wear clothes adapted to the manipulation of the product to avoid contamination (e.g. : gloves, mask, hygiene cap, overall...)
- Protect the product from any form of humidity
- Use, in one time, after opening, the entire quantity of product of the container. If it is not possible, close the container immediately after sampling the quantity of powder required.

The product is intended to be used in vitro for research or further manufacturing only and not for use as an Active Pharmaceutical Ingredient or food or animal feed.

**Application:**

Not applicable

**Uses:**

Not applicable

**Signs of deterioration:**

Not applicable